

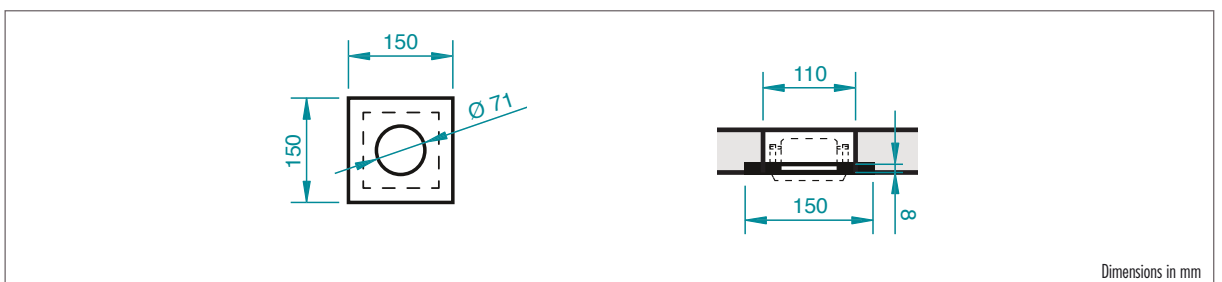
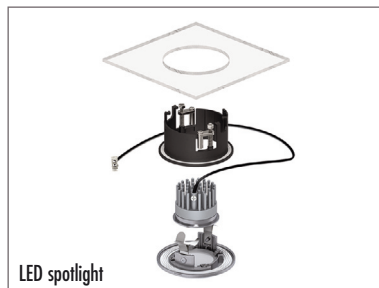
LED spotlight

Technical data

Housing	Colour	chrome-matt
	Finish	galvanized
	Material	die-cast aluminium
	Front	removable
	Protection class	IP 65 on front side
	Weight	0,185 kg
LED lamp	Light colour	warm white
	Colour temperature	3000 K
	Rated current	350 mA
	Rated power	6,3 W
	Dimmable	with trailing edge phase control dimmer 20 – 100 %
	Connection type	approx. 15 cm connection cable, 2x 0,33 mm ² with AMP plug system, 2-pin
	Average lifetime	50000 hours
	Material	aluminium / polycarbonate
	Weight	0,080 kg

Note: do not cover with insulating material when installing

Power supply	Output / Rated current	max. 350 mA
	/ Rated power	6,0 – 7,0 W
	/ Connection type	approx. 20 cm cable with AMP plug-system 2-pole (reverse polarity protected)
	Input / Rated voltage	220 – 240 V AC / 160 – 280 V DC
	/ Rated current	50 / 60 Hz
	/ Frequency	max. 0,05 A (230 V)
	/ Connection type	through-wiring with screwless terminals (rigid / flexible cables Ø 0.5 – 1.5 mm ²) possible through-wiring for further luminaire with a safety class II
	Material	Polycarbonate
	Dimensions	65 x 24 mm
	Weight	0,100 kg
Dimmable	with trailing edge phase control dimmer 20 – 100 %	



LED spotlight

Reviewed on: 06/2022

Replace DS from: –

The relevant recommendations and guidelines, as well as DIN regulations, European standards and safety datasheets are to be observed. The recognised architectural and technical rules apply. We accept liability for the perfect quality of our products. Our processing recommendations are based upon trials and practical experience; they can, however, be no more than general instructions without assurance as to their quality, since we have no influence on the site conditions, on the execution of the work and the processing. With the issuing of this product datasheet previous versions cease to be valid.

LUX ELEMENTS GmbH & Co. KG

An der Schusterinsel 7
D - 51379 Leverkusen-Opladen
Tel. +49 (0) 21 71/72 12-0
Fax +49 (0) 21 71/72 12-40
E-Mail info@luxelements.de

LUX ELEMENTS S.A.S

ZI-31, rue d'Ensisheim
F - 68190 Ungersheim
Tél. +33 (0) 3 89 83 69 79
Fax +33 (0) 3 89 48 83 27
E-Mail info@luxelements.fr